

Research Fellowships in Europe

Jennifer Brennan
MSCA National Contact Point



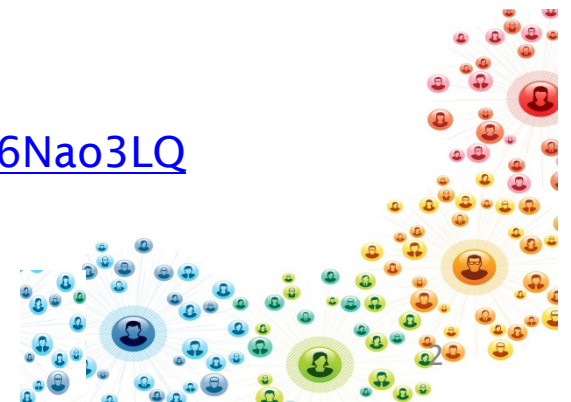
Today's webinar

Topic: Fellowship opportunities for non-European researchers in the **Marie Skłodowska-Curie** actions

Agenda (1 hour 15 min):

1. Presentation by NCP – 30 min
2. Tips from a proposal evaluator – 15 min
3. Testimonial from successful applicant – 15 min
4. Question & Answers – 15 min

- The webinar will be recorded and published on https://www.youtube.com/channel/UC_jck_ddHgovdloD6Nao3LQ
- The presentations are available as Handouts



Speakers



Dr. Jennifer Brennan
MSCA National Contact Point

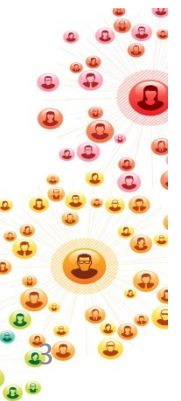
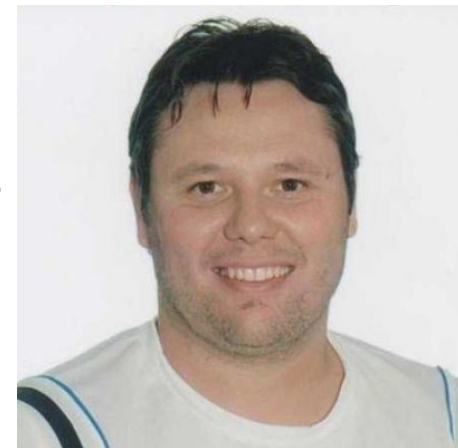


11th May
Dr. Komal Bagga
MSC Fellow



Dr. Valerie Heffernan
MSCA Call Evaluator

12th May
Dr. Pablo E Tomatis
MSC Fellow

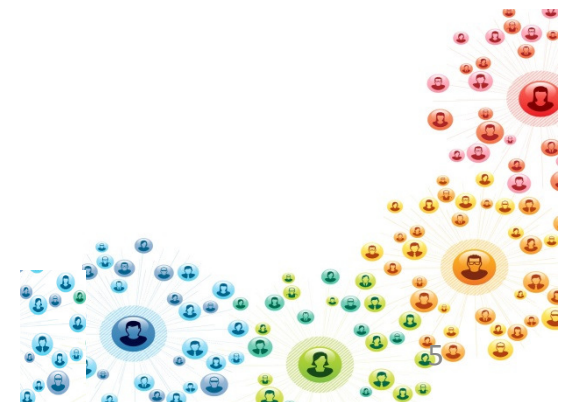


Net4Mobility is the worldwide network of MSCA National Contact Points

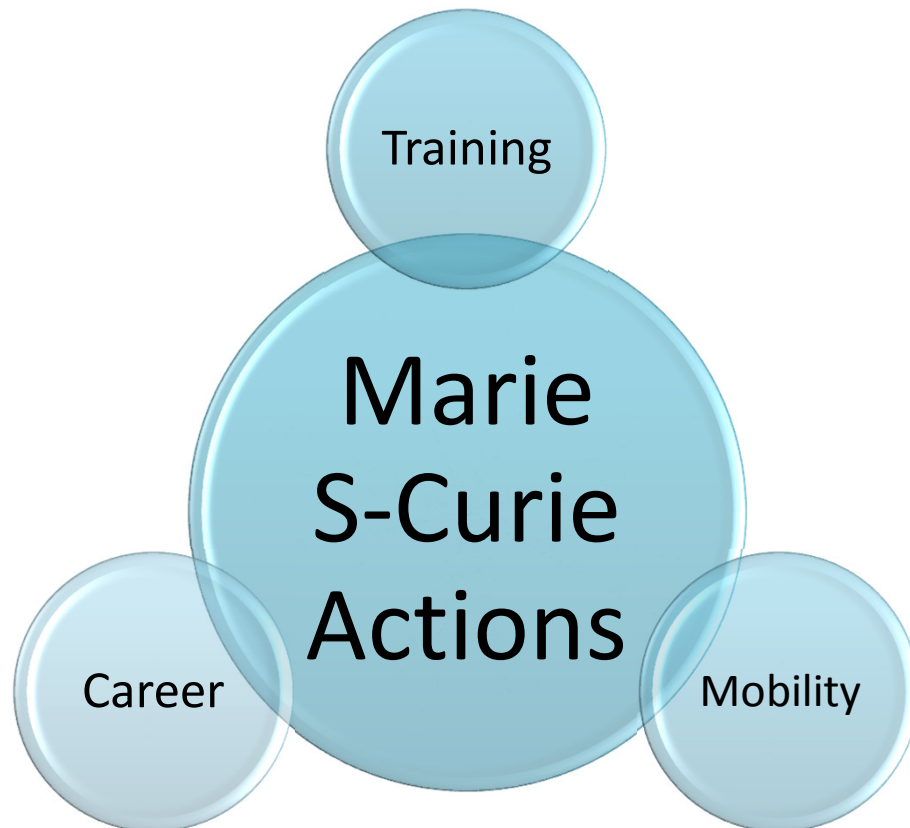
<http://net4mobility.eu/ncp-contacts.html>



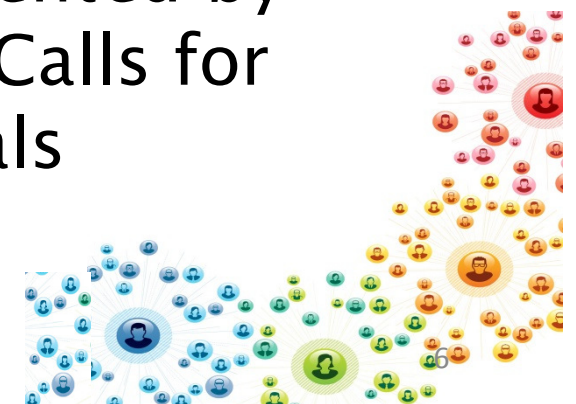
WHAT ARE THE MARIE SKŁODOWSKA-CURIE ACTIONS?



Marie Skłodowska-Curie actions (MSCA)



- Part of the EU's Horizon 2020 Research & Innovation Funding Programme 2014-2020
- Fund **all areas of research**
- Implemented by annual Calls for Proposals



RISE

- Research & Innovation Staff Exchange

ITN

- Innovative Training Networks

COFUND

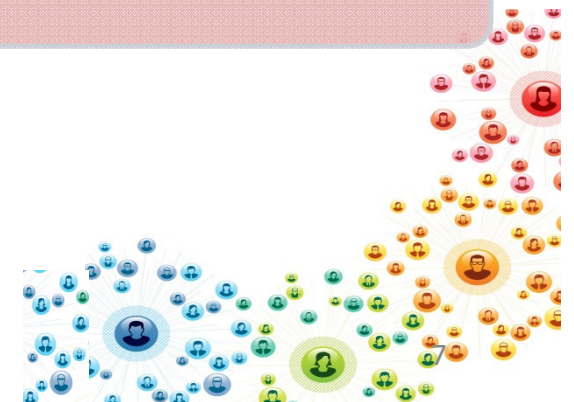
- Co-financing fellowship or doctoral programmes with transnational mobility

NIGHT

- European Researchers' Night

IF

- Individual Fellowships



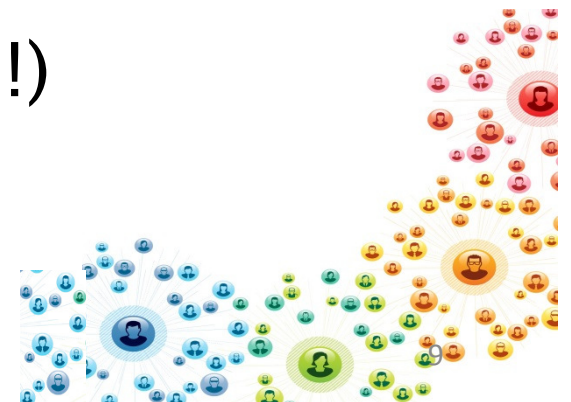
Individual Fellowships (IF)

- A personal fellowship to support a period of mobility
- For Experienced Researchers
- Fully-funded fellowships
 - Attractive salary, research costs etc.
- Academic or non-academic (e.g. industry/NGO) host



Eligible Researchers

- Those who at the call deadline:
 - Have a doctoral (PhD) degree OR
 - Have at least four years full-time equivalent research experience after the degree that would allow them to begin PhD studies
- No age limits
- No upper experience limits (not just for “young researchers”!)
- Comply with the **Mobility Rule**



“Europe” = 28 Member States (MS) plus 14 Associated Countries (AC) e.g. Norway, Turkey, Tunisia

Two types of IF



Europe



The World



Europe

European Fellowships

1 – 2 years

Global Fellowships

2 – 3 years

(incl. 12 months back in Europe)



1. European Fellowships

- Duration 12 to 24 months
- Researchers from outside Europe (Third Countries – TC) can apply for a European Fellowship
- You do not have to be currently living in Europe to apply
- You need to find a host organisation and supervisor in Europe to support your application – Net4Mobility can help!



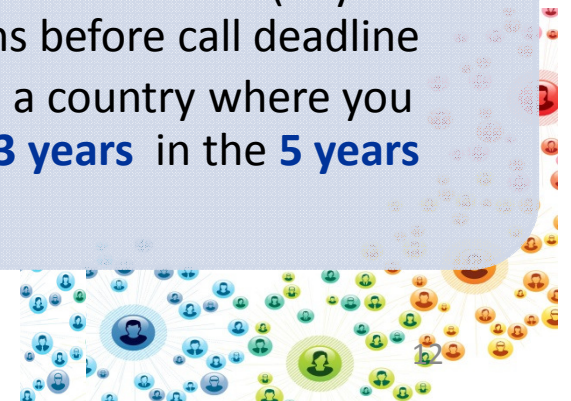
European Fellowships – Four Panels

Standard EF

- For those coming to or moving within Europe
- **Mobility Rule:** Can only apply with a host in a country where you have lived for no more than **12 months** in the **3 years** before the call deadline (14th September 2016)

Career Restart

- For those coming to or moving within Europe
- For people who have taken a career break (any reason) for at least 12 months before call deadline
- Can only apply with a host in a country where you have lived for no more than **3 years** in the **5 years** before the call deadline



European Fellowships – Four Panels

Reintegration

- For those who wish to (or recently have) relocated to Europe from outside
- Must be a European citizen or previous long-term resident (≥ 5 years of research work in Europe)
- Can only apply with a host in a country where you have lived for no more than **3 years** in the **5 years** before the call deadline

Society & Enterprise

- For those coming to or moving within Europe
- The host must be a non-academic organisation e.g. a company, an NGO, a voluntary organisation,.....
- Can only apply with a host in a country where you have lived for no more than **3 years** in the **5 years** before the call deadline



EF – Am I eligible?

Q1 I will submit my doctoral thesis in October 2016: am I eligible? I will have 3 years of research experience by the Call deadline.

A1 No, you must have been awarded your doctoral degree or have four years of research experience before the call deadline (14th September 2016)

Q2 I am from Brazil and have lived there all my life until January 2016, when I moved from Brazil to France to carry out postdoctoral research. Can I apply in 2016 for an EF to remain in France?

A2 Yes, since you have been in France for less than 12 months in the past three years, you are eligible to apply for an EF with a French organisation

For answers to eligibility questions, visit the MSCA Blog at <http://mariecurieactions.blogspot.ie/> or contact an NCP!



2. Global Fellowships

- Duration 24 to 36 months
- Involving two organisations in two countries:
 - A partner organisation **outside Europe**
(spend the first 12 to 24 months of the fellowship here)
 - A beneficiary organisation **in Europe**
(spend the last 12 months of the fellowship here)
- Open to citizens and long-term residents (> 5 years of research work in Europe) of a European country
- Mobility Rule: can only apply with a host in a country **outside Europe** where you have lived for no more than 12 months in the 3 years before the call deadline – 14th September 2016



Secondments

- During the EF or GF, can be seconded to any host organisation in Europe only
- Ideally should take place in a different sector, e.g. university to company or vice-versa

Fellowship Duration	Maximum Secondment Duration
≤ 18 months	3 months
> 18 months	6 months

- The secondment can be split into several shorter periods

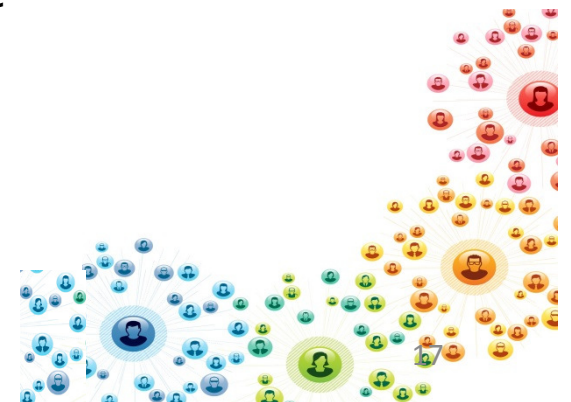


IF is more than just a research project....

It is a career development fellowship, and should include:

- Training through research (individual project)
- Additional scientific skills (new techniques, instruments etc.)
- Transferable skills (e.g. communication, IPR, entrepreneurship etc.)
- Interdisciplinary/inter-sectoral transfer of knowledge (e.g. secondments). Opportunity to link with industry, NGO, public sector, national archive etc.
- Research and financial management of the fellowship
- Organising and taking part in events (including public engagement)
- Training in gender, ethics issues and open science

All managed by a Career Development Plan



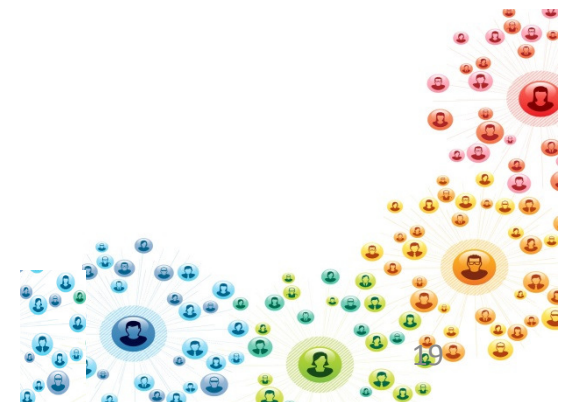
How much funding will I receive?

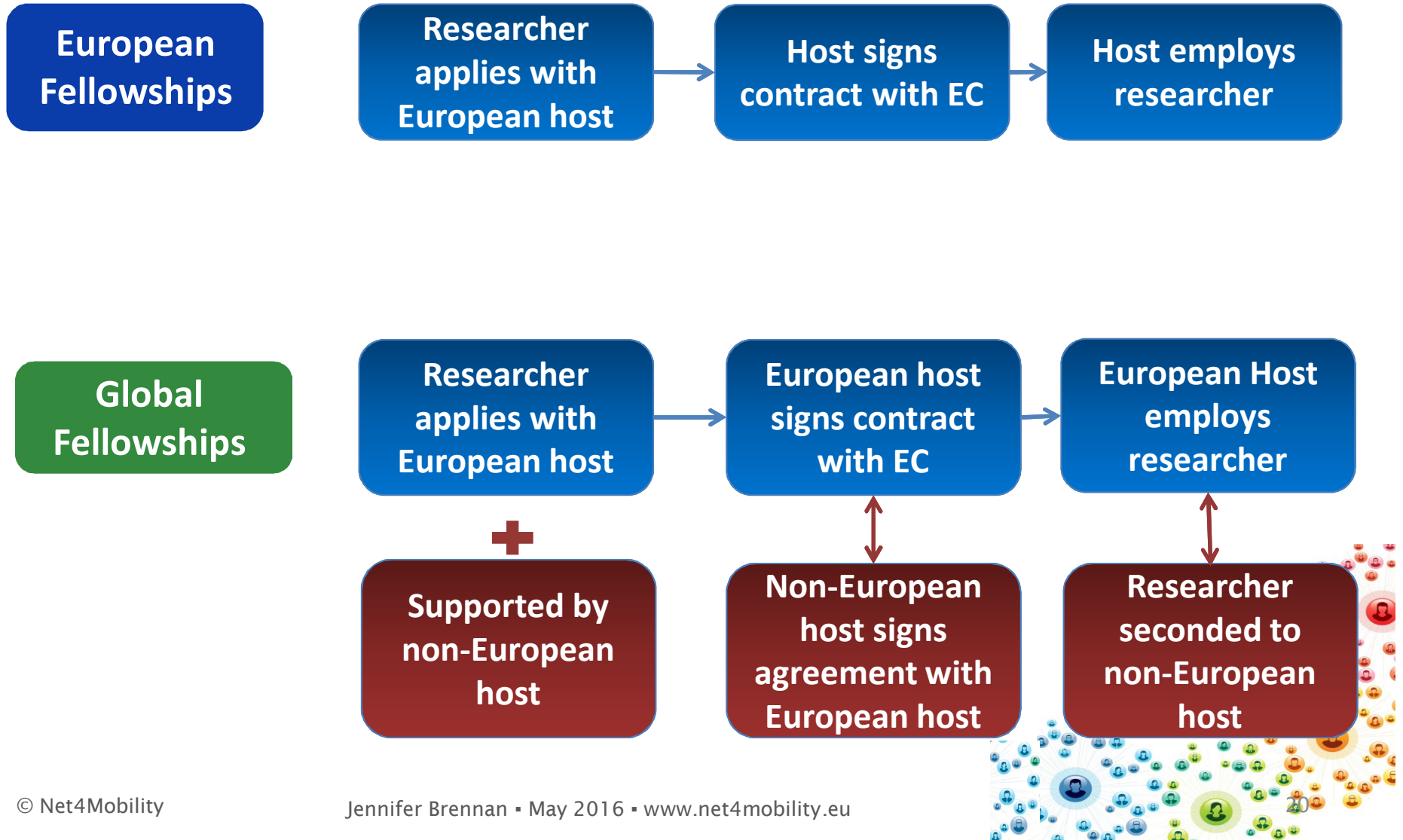
Categories of eligible costs	Costs of researcher PER MONTH			Institutional costs PER MONTH	
	Living allowance (a)	Mobility allowance (b)	Family allowance (c)	Research, training and networking costs (a)	Management and indirect costs (b)
Marie Skłodowska-Curie action					
IF (100%)	4 650	600	500	800	650

- Fellows' salary = Living Allowance + Mobility Allowance (+ Family Allowance)
- There is a country-specific correction factor to account for different costs of living in each country
- **!!!!** Take-home pay varies considerably by country – ask your NCP for an estimate



HOW DO I APPLY?





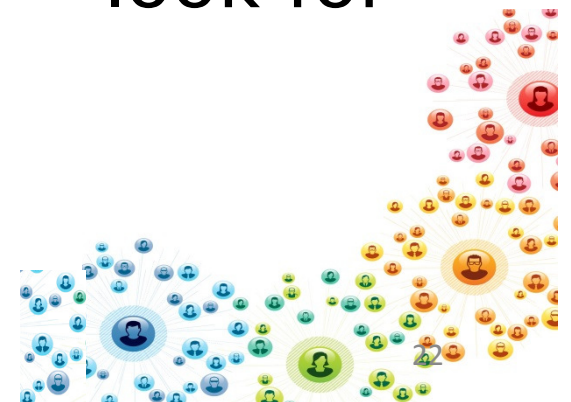
How long is the proposal?

- 10 pages main proposal
 - Excellence
 - Impact
 - Implementation
- 5 pages researcher's curriculum vitae
- Ethics section (if applicable)
- Tables with details of the host organisation(s) – 1 table per organisation



Where do I submit the application?

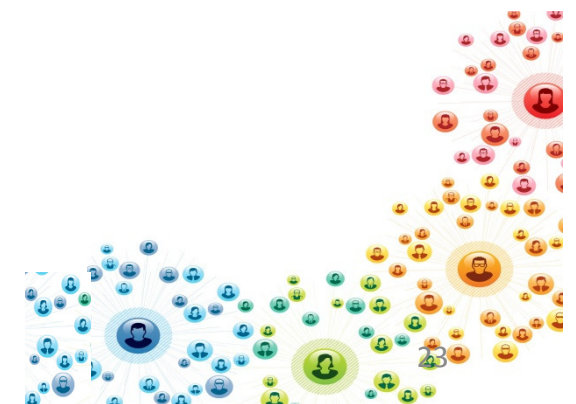
- All online submission
- Via EU Participant Portal
<http://ec.europa.eu/research/participants/portal/desktop/en/opportunities/index.html>
- Guide for Applicants (including proposal template) is available on the Participant Portal – section on “H2020 Calls” – look for H2020-MSCA-IF-2016



How is my application evaluated?

Evaluated using international peer review

- Proposals are read and scored by at least 3 experts in the field
- Consensus meeting to agree scores and comments
- Use 8 disciplinary evaluation panels:
 - Chemistry (CHE)
 - Physics (PHY)
 - Mathematics (MAT)
 - Life Sciences (LIF)
 - Economic Sciences (ECO)
 - Information Sciences and Engineering (ENG)
 - Social Sciences & Humanities (SOC)
 - Environment and Geosciences (ENV)



What happens afterwards?

Results are issued in February 2017

What happens if I am successful?

- Paperwork (grant agreement) will be finalised by the host organisation by May 2017
- You need to arrange a start date with the host organisation
- You can start the fellowship in May 2017, or postpone up to September 2018 (tbc)

What if I am not successful?

- You can re-apply to the 2017 Call (September 2017) as long as you are still eligible
- You can use the feedback from the first application to improve the new application



How can I find a host organisation?



www.euraxess.eu



<http://net4mobility.eu/eoi.html>



Networking!
e.g. LinkedIn,
ResearchGate,.....



Who can help me with my application?



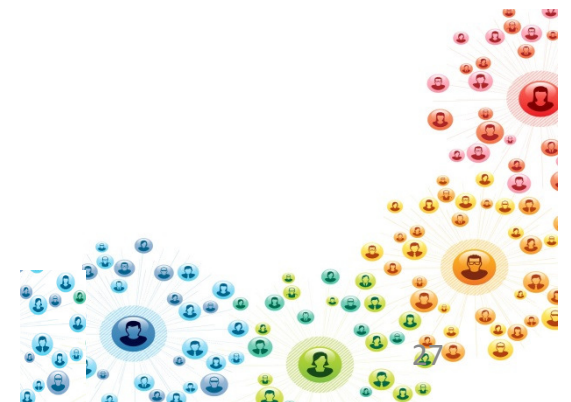
<http://www.net4mobility.eu/ncp-contacts.html>

- National Contact Points
 - In the European host country
 - In your home country
 - Full list of NCPs at http://ec.europa.eu/research/participants/portal/desktop/en/support/national_contact_points.html
- Research Support Offices from the European host organisation
- Bilateral EU Cooperation Projects <http://www.bilat.eu/>



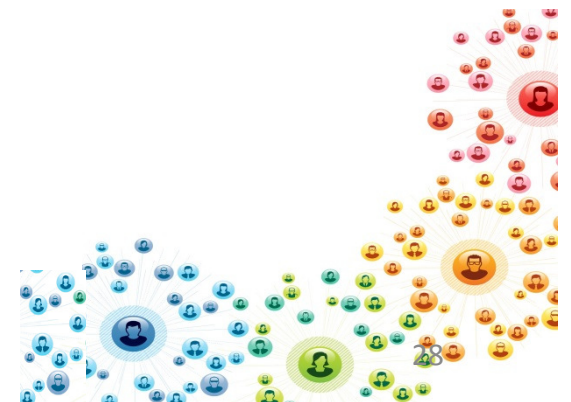
Who can help me with my application?

- Range of supports available in countries outside Europe, for example, in **Egypt**:
 - Dedicated National portal for EU-Egypt STI Cooperation Portal including specific Section for MSCA and its Schemes.
 - Establishment of "Egypt Marie Curie Support Office" to help Egyptian Researchers to get familiar with MSC Actions.
 - Social Media: Facebook Page for EU Funding and Marie-Curie Actions
 - Publications: Catalogue of Research Profiles and Expressions of Interest.



Additional funding for Experienced Researchers – MSCA COFUND

- Many regional/national/international fellowship schemes COFUNDED by MSCA
- Each programme is unique
- All open calls advertised on EURAXESS
www.euraxess.eu



Looking for Masters/PhD opportunities in Europe?

- If you are not eligible for an IF and would like to find Masters or PhD opportunities in Europe, these websites can help:
 - www.findaphd.com
 - http://eacea.ec.europa.eu/erasmus_mundus/results_compendia/elected_projects_action_1_master_courses_en.php
 - www.euraxess.eu
- EURAXESS lists all opportunities to join a MSCA Innovative Training Network and carry out a period of training (usually to PhD level) in Europe
 - http://ec.europa.eu/research/mariecurieactions/about-msca/actions/itn/index_en.htm
- EURAXESS also lists all opportunities to join a MSCA COFUND Doctoral Programme



Thank you for your
attention!

